

# Entitlement Management

## Why Entitlement Management?

Managing fine-grained authorizations to applications and data has become a critical business challenge, highlighted by the requirement to audit and maintain compliance.

Nextlabs Entitlement Management is an extensible XACML-based system that allows organizations to classify data, control access, apply data protection, and audit data access across the enterprise.

**The challenge:** Most organizations have hundreds of applications and systems, each of which maintain their own access controls with no standard definition or centralized administration. Instead, authorization rules are programmed directly into each application.

## THE SOLUTION

NextLabs Entitlement Management (EM) solutions help organizations prevent data breaches caused by internal and external threats by enhancing access control to critical business applications and data. NextLabs Entitlement Management integrates an attribute-based policy platform with leading enterprise and cloud applications to provide automated data classification, access control, data protection, and activity monitoring and reporting. Out-of-the-box integrations accelerate time to market and value and allow organizations to rapidly meet their security and compliance objectives.

NextLabs Entitlement Management is the only Entitlement Management system that supports fine-grained policy decisions and enforcement on servers, desktops, laptops, and mobile devices—both online and offline. The solution leverages NextLabs' patented dynamic authorization technology and Attribute-Based Access Control (ABAC).

The unmatched ease-of-use and scalability of Entitlement Management allows users to configure company policy that can be applied to applications and data on 100,000's of hosts in hours, instead of months.

## THE RESULTS

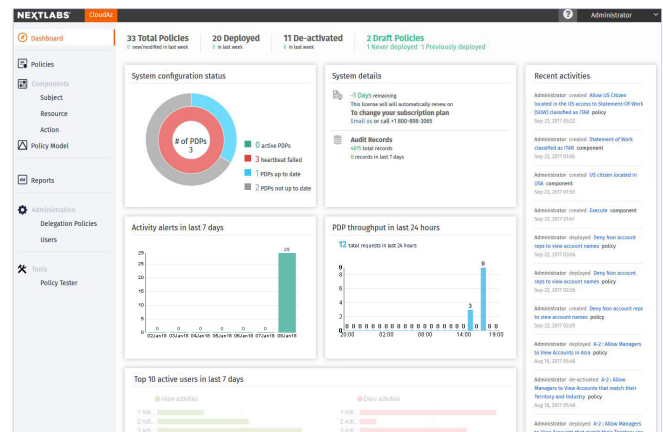
- Universal Policy Across Applications
- Enterprise Scalability
- Identity-Aware Enforcement
- Continuous Compliance
- Rapid Application Development

## KEY FEATURES

- Attribute-Based Access Control
- Externalized Authorization
- Centralized Policy Management
- Deep Application Integration
- Automated Data Classification
- Centralized Visibility & Control

NextLabs Entitlement Management automates data classification, policy enforcement, access control management, digital rights management, and audit for data and applications.

Entitlement Management protects data, reduces the cost of maintaining authorization logic, streamlines entitlement administration and audit, and provides consistent enforcement across applications.



## UNIVERSAL POLICY ACROSS APPLICATIONS

NextLabs Entitlement Management supports fine-grained policy decisions and enforcement on servers, desktops, laptops, and mobile devices—both online and offline.

A single policy can be specified and applied consistently across systems and applications to provide the same entitlements to a class of data wherever it resides. With out-of-the-box adapters for common commercial applications and a powerful SDK, Entitlement Management can manage entitlements for custom and commercial applications, cross platform, on servers and endpoints.

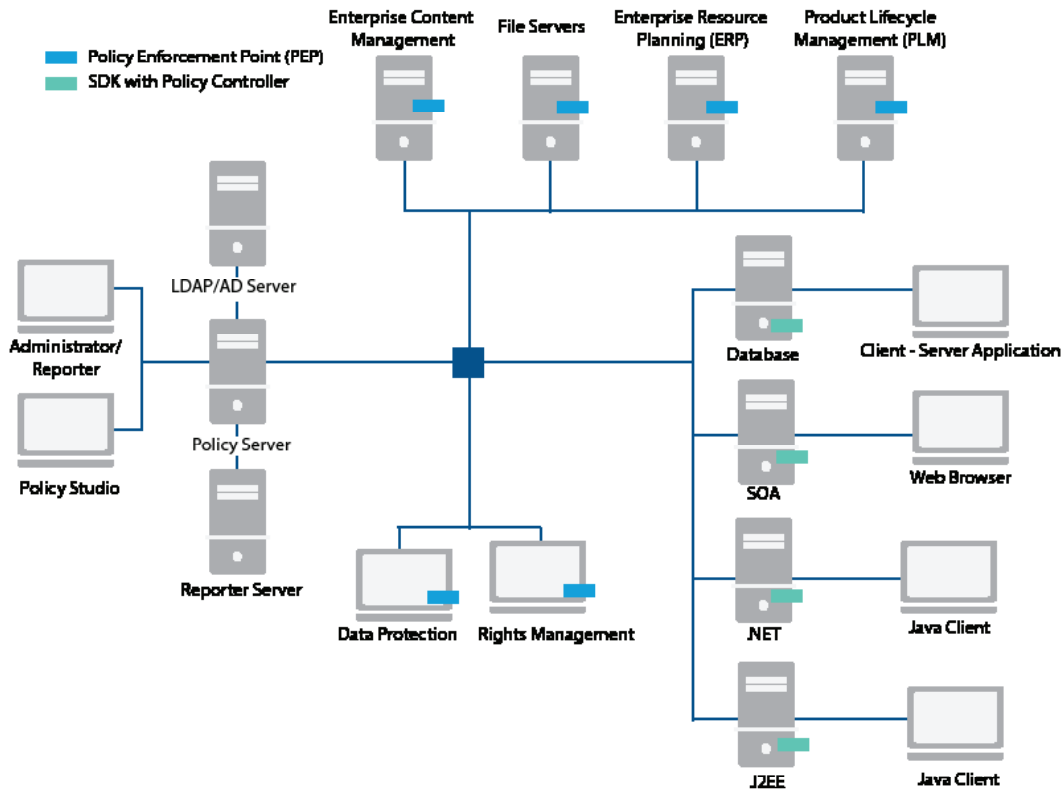
## ENTERPRISE SCALABILITY

The distributed architecture and highly-optimized policy deployment technology of Entitlement Management provide enterprise class scalability. The Entitlement Management Policy Controller is a distributed policy decision point (PDP) that provides real-time policy evaluation. Policy is completely evaluated by the policy controller without the need for costly server lookups or network round-trips, allowing Entitlement Management to work even for applications that are offline or occasionally connected.

## IDENTITY-AWARE ENFORCEMENT

The NextLabs Entitlement Management Policy Server integrates with identity management infrastructure, such as Microsoft Active Directory, LDAP directory servers, and federated identities so that enterprise identity can be applied consistently across applications using role- or attribute-based policy. Roles, groups, and user attributes managed within identity management can be leveraged by entitlements across any application. As users change positions, policy evaluation automatically adapts and a history of identity is maintained, enabling historical authorization audit.

In addition to user identity, NextLabs Entitlement Management supports fine-grained policy based on computers and applications. This allows you to create entitlements not only for users, but also for different classes of computers (e.g., “Unencrypted Laptops” or “Corporate PCs”) and applications (e.g., “Approved Email Applications” or “Financial Applications”). Examples of identity-aware capabilities include fine-grained access control, data masking, data segregation, and segregation of duties.



## CENTRAL POLICY MANAGEMENT

By externalizing the definition of entitlements from individual applications and using a standard policy language, Entitlement Management eliminates the need to maintain custom authorization logic within each application—removing administrative silos and simplifying authorization audit.

### Delegated Administration

The robust delegated administration model allows ownership and administrative tasks to be delegated to individual business units to enable collaboration and more scalable policy definition and management.

### Policy Lifecycle Management

Each policy object is managed through a comprehensive lifecycle, from creation to deactivation or deletion. The role-based lifecycle management features ensure that each policy is validated and approved before deployment to production systems.

### Policy Audit and Reporting

The Policy Management tool provides detailed policy audit, version history, and reporting features making it simple to audit or review policy changes.

## CONTINUOUS COMPLIANCE

Access rights, activity, and policy enforcement are continuously tracked, simplifying the collection and preparation for internal or third party compliance audit.

### Activity Audit

Entitlement Management Adapters actively monitor data activity across systems and applications, allowing IT to run reports to determine the effectiveness of policies or view end-to-end data lineage, including creation, access, duplication, use, distribution, and destruction.

### Compliance Reporting

The Entitlement Management Report Server allows business analysts and compliance officers to create and share policy and activity reports, including summary, trend, and detailed event analysis. The Report Server reduces the cost of responding to auditors, legal inquiry, or incident investigation.

## RAPID APPLICATION DEVELOPMENT

Entitlement Management makes XACML entitlements more productive, by providing a Rapid Application Development (RAD) environment that includes:

### Graphical Policy Tools

Policy Studio includes easy-to-use, graphical policy configuration and management tools for business analysts and administrators.

### Extensible Policy Language

Entitlement Management enhances the extensibility and usability of the XACML standard by providing a compatible 4GL (fourth generation language) layer called ACPL®. Using ACPL, new policy statements, policy types, context, and obligations can be easily configured.

### Reusable Policy Component Model

Policy Components define a reusable business vocabulary for entitled objects such as users, computers, data resources, and applications. The Policy Component Model dynamically maps business terms to the underlying systems and applications, so that when systems and applications change, policy is unaffected.

### Software Developer Kit

The software developer kit (SDK) is available in Java, .NET, JavaScript, PHP, C/C++/C#, and several other programming languages. The Policy Controller provides many services to help developers of policy enforcement points.

## OUT-OF-THE-BOX ENTITLEMENT MANAGERS

NextLabs Entitlement Management runs on NextLabs Control Center and includes the following out-of-the-box Entitlement Managers.

Component	Entitlement Manager
File Servers	<ul style="list-style-type: none"><li>Entitlement Manager for Windows File Servers</li><li>Entitlement Manager for Linux File Servers</li></ul>
Enterprise Content Management (ECM)	<ul style="list-style-type: none"><li>Entitlement Manager for Microsoft SharePoint</li><li>Entitlement Manager for IBM FileNet</li><li>Entitlement Manager for Documentum</li><li>Entitlement Manager for SAP DMS</li></ul>

Component	Entitlement Manager
Enterprise Resource Planning (ERP)	<ul style="list-style-type: none"> <li>■ Entitlement Manager for SAP ECC</li> <li>■ Entitlement Manager for SAP CFolder</li> <li>■ Entitlement Manager for SAP S/4HANA</li> <li>■ Entitlement Manager for SAP BW</li> </ul>
Customer Relationship Management (CRM)	<ul style="list-style-type: none"> <li>■ Entitlement Manager for SAP CRM</li> </ul>
Product Lifecycle Management (PLM)	<ul style="list-style-type: none"> <li>■ Entitlement Manager for SAP PLM</li> <li>■ Entitlement Manager for Enovia</li> <li>■ Entitlement Manager for PTC Windchill</li> </ul>
Communications	<ul style="list-style-type: none"> <li>■ Entitlement Manager for Skype for Business</li> <li>■ Entitlement Manager for Exchange</li> <li>■ Entitlement Manager for Outlook</li> <li>■ Entitlement Manager for Windows Desktop</li> </ul>
SaaS Applications	<ul style="list-style-type: none"> <li>■ Entitlement Manager for Microsoft Dynamics 365</li> <li>■ Entitlement Manager for Salesforce</li> <li>■ Entitlement Manager for ServiceNow</li> <li>■ Entitlement Manager for Slack</li> </ul>

## ABOUT NEXTLABS

NextLabs®, Inc. provides data-centric security software to protect business critical data and applications. Our patented dynamic authorization technology and industry leading attribute-based policy platform helps enterprises identify and protect sensitive data, monitor and control access to the data, and prevent regulatory violations – whether in the cloud or on premises. The software automates enforcement of security controls and compliance policies to enable secure information sharing across the extended enterprise. NextLabs has some of the largest global enterprises as customers and has strategic relationships with industry leaders such as SAP, Siemens, Microsoft, and IBM.

For more information on NextLabs, please visit <http://www.nextlabs.com>.