



# Entitlement Pack for SAP EWM

## Secure Supply Chain Planning Ecosystem

### THE SITUATION

Organizations rely on their supply chain planning applications (like SAP EWM) to streamline their supply chains, increasingly across many organizations that can span several continents.

Companies need to comply with strict regulations and IP protection obligations, while at the same time not stifling this vital collaboration.

This requires data-level access controls, but existing approaches for SAP EWM are either difficult to maintain or require costly custom development.



### THE SOLUTION

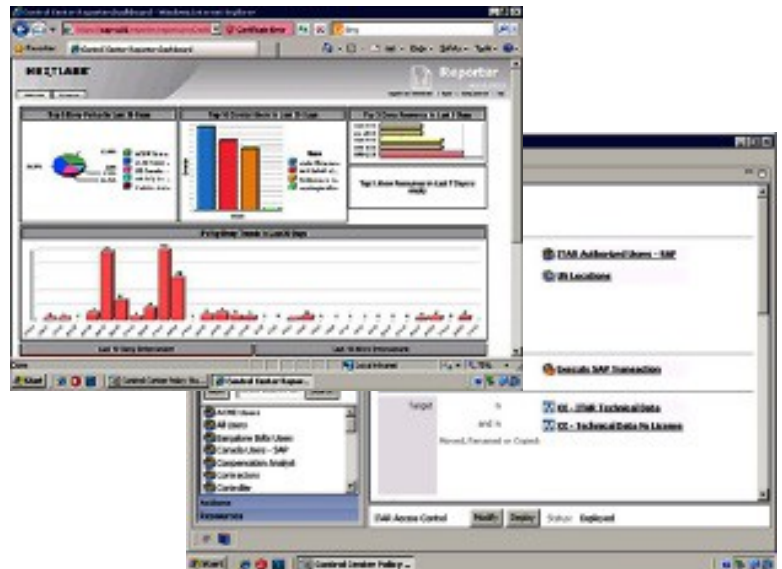
The Entitlement Pack for SAP EWM extends SAP EWM's native authorization model to control and protect essential data across the entire supply chain.

Controls are based on a flexible policy system that allows customers to address compliance requirements quickly across multiple SAP and non-SAP applications with the lowest total cost of ownership.

### THE RESULTS

- Automate Regulatory and Intellectual Property (IP) Compliance
- Secure Supplier Collaboration
- Consolidate SAP Instances to Reduce Costs
- Eliminate Costly Customization

The Entitlement Pack for SAP Extended Warehouse Management (EWM) extends SAP EWM's native authorization model to control and protect data across the entire supply chain



## **EXTENDING PLM ACCESS CONTROL CONTEXTS**

NextLabs Entitlement Pack for SAP EWM extends SAP Access Control Contexts (ACCs) to provide fine-grained access control for EWM business objects, such as Inbound Deliveries, Outbound Deliveries, Goods Receipts, and Inspection Documents.

Policy dynamically references data-level classifications applied to EWM objects, including ACCs. For instance, classifications can be defined in the Security Classification Module to determine applicable license restrictions, IP obligations, or other information.

## **SECURITY CLASSIFICATION MODULE**

The Security Classification Module is part of the Entitlement Manager for SAP and allows you to automatically manage data classification values and simplify the process of identifying and maintaining classification values to improve security and compliance. Security classifications can easily be configured, extended, and managed, using batch, interactive, or programmatic interfaces.

## **POWERFUL POLICY MANAGEMENT**

The Entitlement Manager for SAP EWM is built on the NextLabs Control Center platform, which uses a powerful policy language to govern end-to-end product data access and usage, from enterprise applications to endpoints.

Access to data is determined by powerful rules that authorize users to data based on security classification, user attributes, and even dynamic factors, such as computer or location. For example, a rule may state, "Allow only US and UK Persons on Project A, located in US or UK, to access materials classified as ITAR ." When a user attempts to access materials, this rule is validated in real-time, with no perceptible latency, before access is granted.

## **INTEGRATED RIGHTS MANAGEMENT**

Integrated Rights Management (IRM) is part of the Entitlement Manager for SAP, and allows you to automatically apply rights protection to documents uploaded to or stored in SAP EWM.

IRM extracts classification and inheritance logic from the business context of the EWM application, and embeds this logic into files in the form of metadata. Files are also NextLabs Protected so that access and usage controls are persistent, even when documents are downloaded out of SAP EWM.

## **CENTRALIZED AUDIT AND REPORTING**

Policy compliance and end user activity are collected in a central Activity Journal for reporting by NextLabs Reporter, a graphical analysis, charting, and reporting application.

## **INTEGRATION WITH USER ADMINISTRATION AND IDENTITY MANAGER**

User attributes, such as citizenship, company, project team, or geographical location, can be leveraged from existing sources, including Center User Administration (CUA), Human Capital Management (HCM), and other third-party identity management or directory servers.

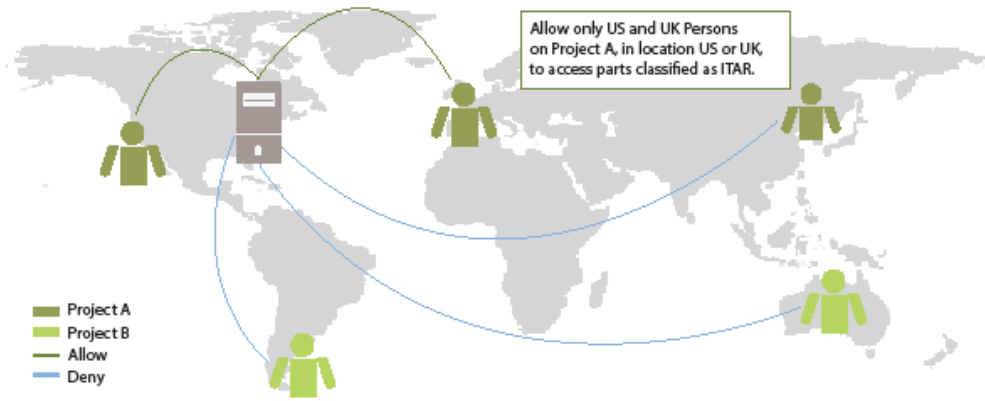
## **ENTITLEMENT MANAGEMENT FOR SAP SUITE**

NextLabs Entitlement Pack for SAP EWM is part of NextLabs Entitlement Manager for SAP. This integrated solution offers the core functionality of the Entitlement Manager for SAP, plus Entitlement Packs with out-of-the-box support for transactions and UI functions across key SAP applications, such as ERP, EWM, APO, PLM, SCM, and CRM.

## **ABOUT NEXTLABS**

NextLabs®, Inc. provides data-centric security software to protect business critical data and applications. Our patented dynamic authorization technology and industry leading attribute-based policy platform helps enterprises identify and protect sensitive data, monitor and control access to the data, and prevent regulatory violations – whether in the cloud or on premises. The software automates enforcement of security controls and compliance policies to enable secure information sharing across the extended enterprise.

NextLabs has some of the largest global enterprises as customers and has strategic relationships with industry leaders such as SAP, Siemens, Microsoft, and IBM. For more information on NextLabs, please visit <http://www.nextlabs.com>.



# NEXTLABS

©NEXTLABS INC. ALL RIGHTS RESERVED