



Entitlement Manager for SAP PLM

Secure PLM EcoSystem

THE SITUATION

Organizations rely on their Product Lifecycle Management (PLM) applications to streamline collaboration around product design and engineering data, increasingly in cross-organization project teams that can span several continents.

Companies need to comply with strict regulations and IP protection obligations, while at the same time not stifling this vital design collaboration.

This requires data-level access controls, but existing approaches for SAP PLM are either difficult to maintain, or require costly custom development.



THE SOLUTION

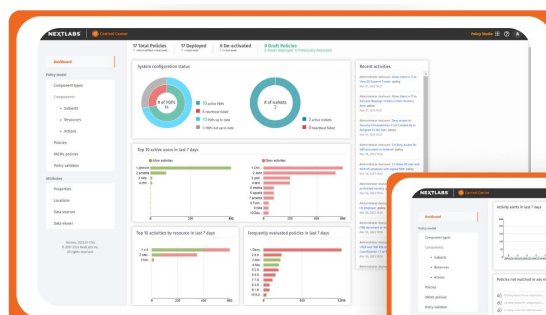
The Entitlement Manager for SAP PLM extends SAP PLM's native authorization model to control and protect product data across the product lifecycle.

Controls are based on a flexible policy system that allows customers to address compliance requirements quickly across multiple SAP and non-SAP applications with the lowest total cost of ownership.

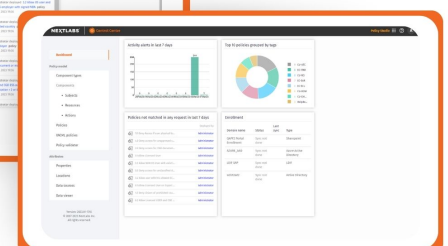
THE RESULTS

- Automate Regulatory and Intellectual Property (IP) Compliance
- Secure Supplier Collaboration
- Consolidate SAP Instances to Reduce Costs
- Eliminate Costly Customization

The Entitlement Manager for SAP Product Lifecycle Management (PLM) extends SAP PLM's native authorization model to control and protect product data across the product lifecycle.



NEXTLABS
Control Center Policy
Studio Dashboard



EXTENDING PLM ACCESS CONTROL CONTEXTS

NextLabs Entitlement Manager for SAP PLM extends SAP Access Control Contexts (ACCs) to provide fine-grained access control for PLM business objects, such as Materials, Documents, BOMs, and Change Masters.

Policy dynamically references data-level classifications applied to PLM objects, including ACCs. For instance, classifications can be defined in the Security Classification Module to determine applicable license restrictions, IP obligations, or other information.

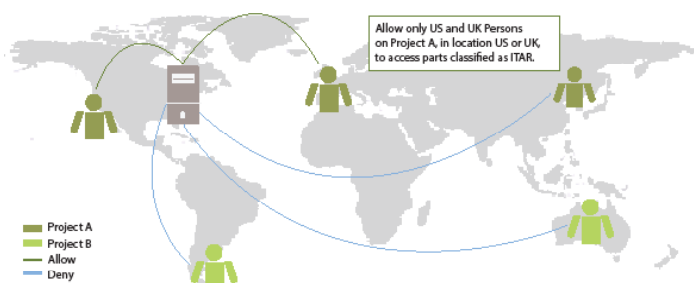
SECURITY CLASSIFICATION MODULE

The Security Classification Module is part of the Entitlement Manager for SAP, and allows you to automatically manage data classification values and simplify the process of identifying and maintaining classification values to improve security and compliance. Security classifications can easily be configured, extended, and managed, using batch, interactive, or programmatic interfaces.

POWERFUL POLICY MANAGEMENT

The Entitlement Manager for SAP PLM is built on the NextLabs Control Center platform, which uses a powerful policy language to govern end-to-end product data access and usage, from enterprise applications to endpoints.

Access to data is determined by powerful rules that authorize users to data based on security classification, user attributes, and even dynamic factors, such as computer or location. For example, a rule may state, "Allow only US and UK Persons on Project A, located in US or UK, to access materials classified as ITAR." When a user attempts to access materials, this rule is validated in real-time, with no perceptible latency, before access is granted.



INTEGRATED RIGHTS MANAGEMENT

Integrated Rights Management (IRM) is part of the Entitlement Manager for SAP, and allows you to automatically apply rights protection to documents uploaded to or stored in SAP PLM. IRM extracts classification and inheritance logic from the business context of the PLM application, and embeds this logic into files in the form of metadata. Files are also NextLabs Protected so that access and usage controls are persistent, even when documents are downloaded out of SAP PLM.

CENTRALIZED AUDIT AND REPORTING

Policy compliance and end user activity are collected in a central Activity Journal for reporting by NextLabs Reporter, a graphical analysis, charting, and reporting application.

INTEGRATION WITH USER ADMINISTRATION AND IDENTITY MANAGER

User attributes, such as citizenship, company, project team, or geographical location, can be leveraged from existing sources, including Center User Administration (CUA), Human Capital Management (HCM), and other third-party identity management or directory servers.

ENTITLEMENT MANAGEMENT FOR SAP SUITE

NextLabs Entitlement Manager for SAP PLM is part of NextLabs Entitlement Manager for SAP. This integrated solution offers the core functionality of the Entitlement Manager for SAP, with out-of-the-box support for transactions and UI functions across key SAP applications, such as ERP, PLM, SCM, and CRM.

ABOUT NEXTLABS

NextLabs®, Inc. provides zero trust data-centric security software to protect business critical data and applications. Our patented dynamic authorization technology and industry leading attribute-based zero trust policy platform helps enterprises identify and protect sensitive data, monitor and control access to the data, and prevent regulatory violations – whether in the cloud or on premises. The software automates enforcement of security controls and compliance policies to enable secure information sharing across the extended enterprise. NextLabs has some of the largest global enterprises as customers and has strategic relationships with industry leaders such as SAP, Siemens, Microsoft, AWS, Accenture, Deloitte, Infosys, and IBM. For more information on NextLabs, please visit <http://www.nextlabs.com>.