A man in a dark suit and white shirt is wearing VR goggles and gesturing with his hands. He is standing in a modern office with large windows and a desk in the background. A network of glowing nodes and lines is overlaid on the scene. The text is centered over the image.

Safeguard Data at the Source  
**SECURING DYNAMIC DATA ACCESS  
WITH REAL-TIME CONTROLS**

*Newsletter November Edition*

# Key Takeaways

- Safeguard Data at the Source: Securing Dynamic Data Access with Real-Time Controls
- Streamline Compliance & Enforce Need-To-Know Access
- NextLabs and the GDPR - Automated, Integrated, Pervasive Protection of Personal Data
- Ready For SASE 2.0?



# Safeguard Data at the Source Securing Dynamic Data Access with Real-Time Controls

---

In our interconnected world, where efficient operations and strong connections rely on secure global data access, safeguarding data at its source becomes pivotal for enterprise resilience.

Prioritizing robust cybersecurity measures, like real-time segregation and dynamic data level controls, not only protects sensitive information and ensures compliance but also fosters trust. Empowering businesses to confidently navigate the complexities of today's dynamic, data-driven environment, promoting sustainable growth and resilience against evolving cyber threats.



# Safeguard Data at the Source

## Dynamic Data Protection Using Attribute-Based Access Control (ABAC)

---

Dynamic Data Protection with Attribute-Based Access Control (ABAC) transforms global data access – enabling row-level security with granular controls and real-time adaptability to ensure authorized access, aligning with data-centric security principles. This not only aids compliance but also provides enhanced visibility, fortifying data integrity at the source and laying a secure foundation for global data access.

In this white paper, learn about the importance of dynamic data protection using Attribute-Based Access Control (ABAC), offering a scalable approach for roles in dynamic environments. Demonstrated through use cases, NextLabs Data Access Enforcer (DAE) ensures data security using ABAC, incorporating data masking, filtering, and manipulation controls.

[Read More](#)



# Streamline Compliance & Enforce Need-To-Know Access



Data Access Enforcer (DAE) for Oracle E-Business Suite (EBS)



Dynamically safeguarding global data access is key for adapting to cyber threats and ensuring the integrity of sensitive information. Discover how to safeguard data in Oracle E-Business Suite (EBS) using Zero Trust policy to control CRUD operations, mask, obfuscate, segregate, and filter data, preventing unauthorized users from viewing/manipulating records in real-time.

Watch Now



Filter Financial Data for Non-Executive Users: Data Access Enforcer (DAE) for SAP BW & BW/4 HANA



Explore how to use policies to dynamically restrict access to financial data in BW reports at the time of access. Prevent non-executive users from viewing information outside their profit centers in SAP GUI and reports generated with SAP Analysis for Office and MS Excel. Securely control data access at every step for enhanced protection for financial data.

Watch Now

# NextLabs and the GDPR **Automated, Integrated, Pervasive Protection of Personal Data**

---

In the vast landscape of the extended enterprise, the strategic adoption of data segregation within a single global instance is fundamental for enterprises. This centralized approach, harmonizing data across entities, users, and devices, offers multifaceted advantages, such as increased efficiency, improved business performance, and analysis. However, with a single global instance, ensuring compliance can be a daunting task.

Explore our solution brief to explore how to automate consistent enforcement of GDPR-related compliance and security policies in a single global instance. With a unified policy platform learn how to safeguard personally identifiable information (PII), prevent security violations from information sharing, external breaches, and internal misuse across the enterprise.

[Read More](#)



## Blog

# Ready For SASE 2.0?

---

To address the challenge of securing data access for enterprises, Gartner introduced Secure Access Service Edge (#SASE) in 2019. SASE seamlessly integrates network and security capabilities as a service, giving priority to device or entity identity and real-time context. This architectural approach streamlines network access, promoting strict adherence to security and compliance policies by utilizing user and device identification through policy-based security measures.

With hybrid and multi cloud architectures being the future for businesses, enterprises need a SASE 2.0 to extend beyond traditional SASE by securing data access with zero-trust principles. This empowers organizations to improve security through dynamically enforced policies, ensuring least privilege access beyond the network perimeter. Explore our article to learn more about SASE 2.0 and its benefits.

[Read More](#)



Safeguard Data at the Source: Securing Dynamic Data Access with Real-Time Controls

Streamline Compliance & Enforce Need-To-Know Access

NextLabs and the GDPR - Automated, Integrated, Pervasive Protection of Personal Data

Ready For SASE 2.0?

# ON-DEMAND VIDEOS

Our on-demand video catalog provides a variety of information about NextLabs' solutions and technology.

The catalog includes regularly uploaded webinars, demos, and informational introductory videos featured through the NextLabs' YouTube channel.

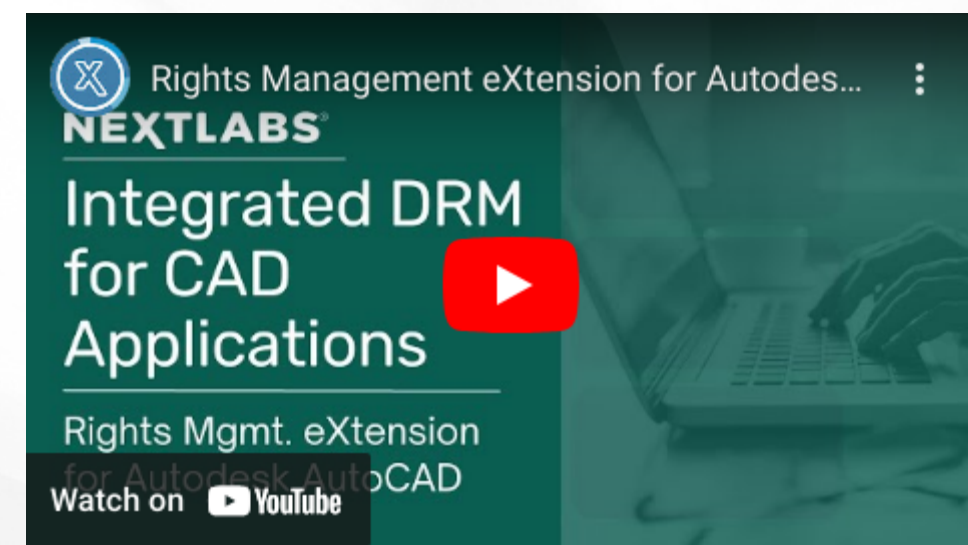
[Explore our on-demand videos](#)

**NEXTLABS®**

©NEXTLABS INC. ALL RIGHTS RESERVED



[Watch Now](#)



[Watch Now](#)



[Watch Now](#)



# Follow Us



<https://www.nextlabs.com/contact-us>

© 2023 NextLabs Inc. All Rights Reserved

NextLabs®, Inc. provides data-centric security software to protect business critical data and applications. Our patented dynamic authorization technology and industry leading attribute-based policy platform helps enterprises identify and protect sensitive data, monitor and control access to the data, and prevent regulatory violations – whether in the cloud or on premises. The software automates enforcement of security controls and compliance policies to enable secure information sharing across the extended enterprise. NextLabs has some of the largest global enterprises as customers and has strategic relationships with industry leaders such as SAP, Siemens, Microsoft, and IBM. For more information on NextLabs, please visit <http://www.nextlabs.com>.

