

**NEXTLABS®**

Zero Trust  
Data-Centric Security

# SkyDRM

Persistently protect files  
stored and shared anywhere

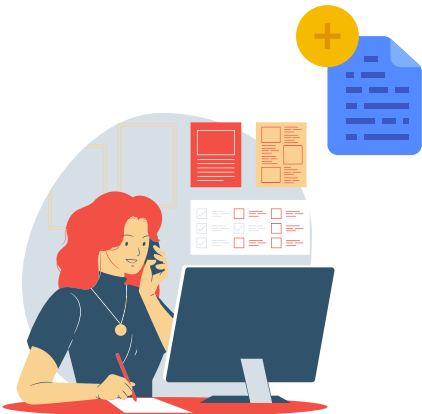




1

### Collaboration: An Essential Need

In a rapidly evolving global economy, enterprises must embrace a **collaborative approach to data sharing** to operate worldwide and foster partnerships.



2

### Need to Share vs. Need to Protect

This calls for the need to **balance between sharing information** and **safeguarding sensitive assets**.



4

### Navigating Extended Sharing

**External collaboration** exacerbates the **risk of IP leakage**, especially when operating within a global supply chain.

3

### Securing Shared Data

As more collaboration tools become widely available, organizations face the challenge of **protecting data once it is shared beyond the source**.

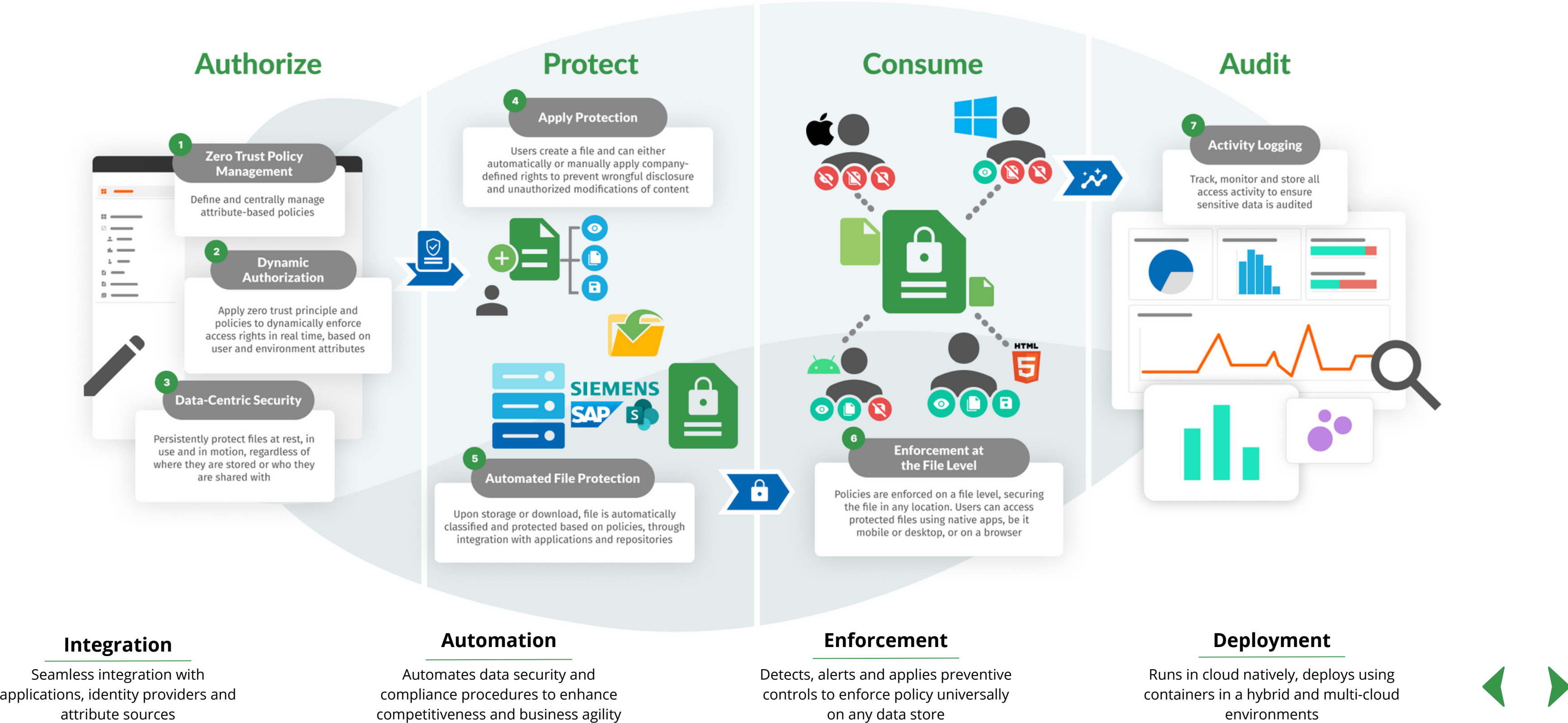


? How do organizations safeguard confidential information, such as trade secrets and IP, **from wrongful disclosure throughout its lifecycle** and **across the extended enterprise**?

💡 **Enterprise Digital Rights Management Solution** that uses **zero trust principle** to automate persistent protection of sensitive information.

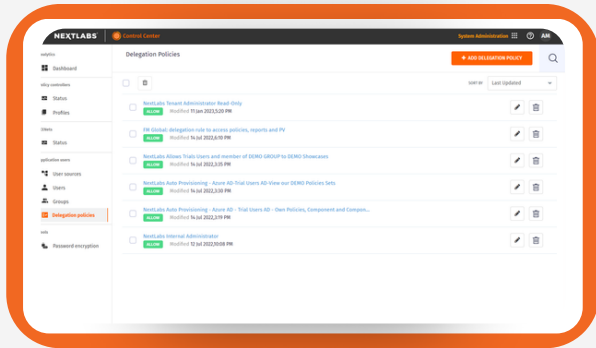


The solution persistently protects files across the information cycle using attribute-based policies. Attribute-based policies dynamically grant permissions for specific actions, such as viewing, editing, copying, forwarding, printing, and extracting content, based on the recipient's identity.



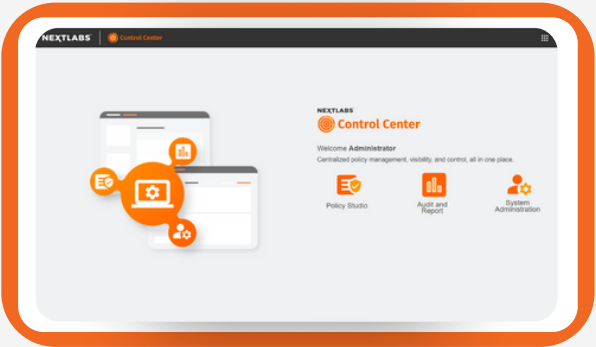
## Centrally Managed Policies

Define single policies that can be consistently applied across the entire enterprise.



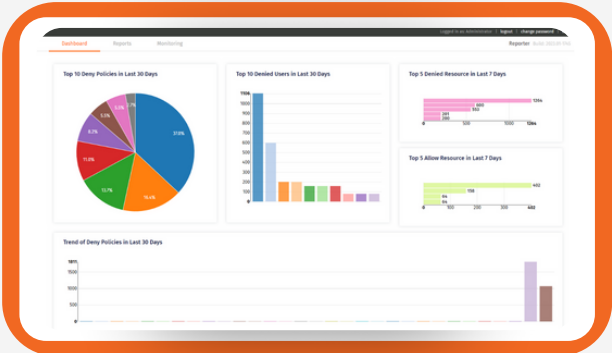
## Dynamic Policy Evaluation

Apply Zero Trust principles to determine who can access what data, and **when** and **where** they can do so in real time

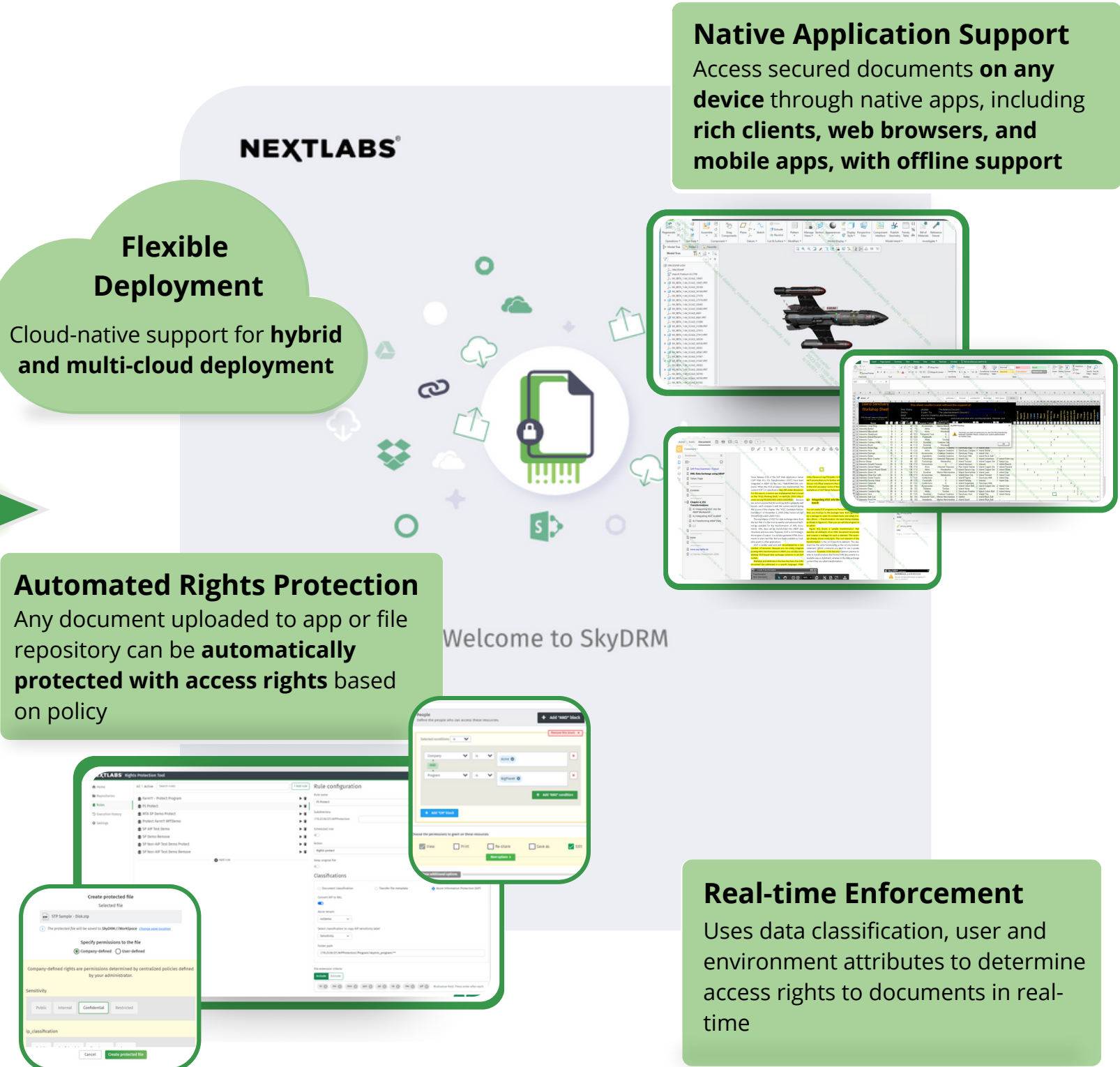


## Centralized Monitoring & Auditing

Monitor, track, report, and alert on risky access activity to critical field(s) with the **central activity log**.



**SkyDRM** provides persistent control of access and usage of digital information stored in file regardless of where it exists. It can safeguard and monitor your business-critical document such as intellectual property and product design, wherever it lives or travels – across devices, data centers, apps, cloud services, and on-premises.



**File Type Agnostic**  
Supports any file type, such as Microsoft Office, PDF, CAD, and rich media

**Cross-enterprise Collaboration**  
Support for **federated identity** to enable frictionless collaboration across organizations

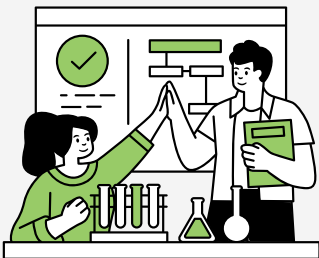




## SkyDRM Benefits:

### Protect IP & Trade Secrets

Provide end-to-end protection across partner networks and prevent data breaches.



### Accelerate Collaboration

Utilize fine-grained policies for flexible access, seamless integration preserves workflow without disruptions.

### Improve Time-to-Market and Reduce Costs

Leverage global workforce and work with the supply chain more effectively without risking IP leakage.



### Enhance Customer Satisfaction

Preserve business relationships by protecting customer and partner data, contracts, and preventing wrongful disclosure.

### Ensure Compliance

Monitor and audit access by centrally tracking IP usage across the partner network, providing increased visibility for compliance.



SkyDRM product line provides support for the following systems:

	Google Drive, OneDrive, SharePoint, Box, Dropbox		Bentley ProjectWise
	SAP ERP		Autodesk AutoCAD
	Microsoft Word, Microsoft PowerPoint, Microsoft Excel		Dassault Systems SolidWorks, Dassault CATIA
	Siemens NX, Siemens Teamcenter		PTC Windchill, PTC Creo

## Deployment Options

SaaS	Private Cloud	On-Premise





**NEXTLABS®**

**Zero Trust  
Data-Centric Security**

Follow us



[www.nextlabs.com/contact-us](http://www.nextlabs.com/contact-us)

© 2023 NextLabs Inc. All Rights Reserved

NextLabs®, Inc. provides zero trust data-centric security software to protect business critical data and applications. Our patented dynamic authorization technology and industry leading attribute-based zero trust policy platform helps enterprises identify and protect sensitive data, monitor and control access to the data, and prevent regulatory violations – whether in the cloud or on premises. The software automates enforcement of security controls and compliance policies to enable secure information sharing across the extended enterprise. NextLabs has some of the largest global enterprises as customers and has strategic relationships with industry leaders such as SAP, Siemens, Microsoft, AWS, Accenture, Deloitte, Infosys, and IBM. For more information on NextLabs, please visit <http://www.nextlabs.com>.

